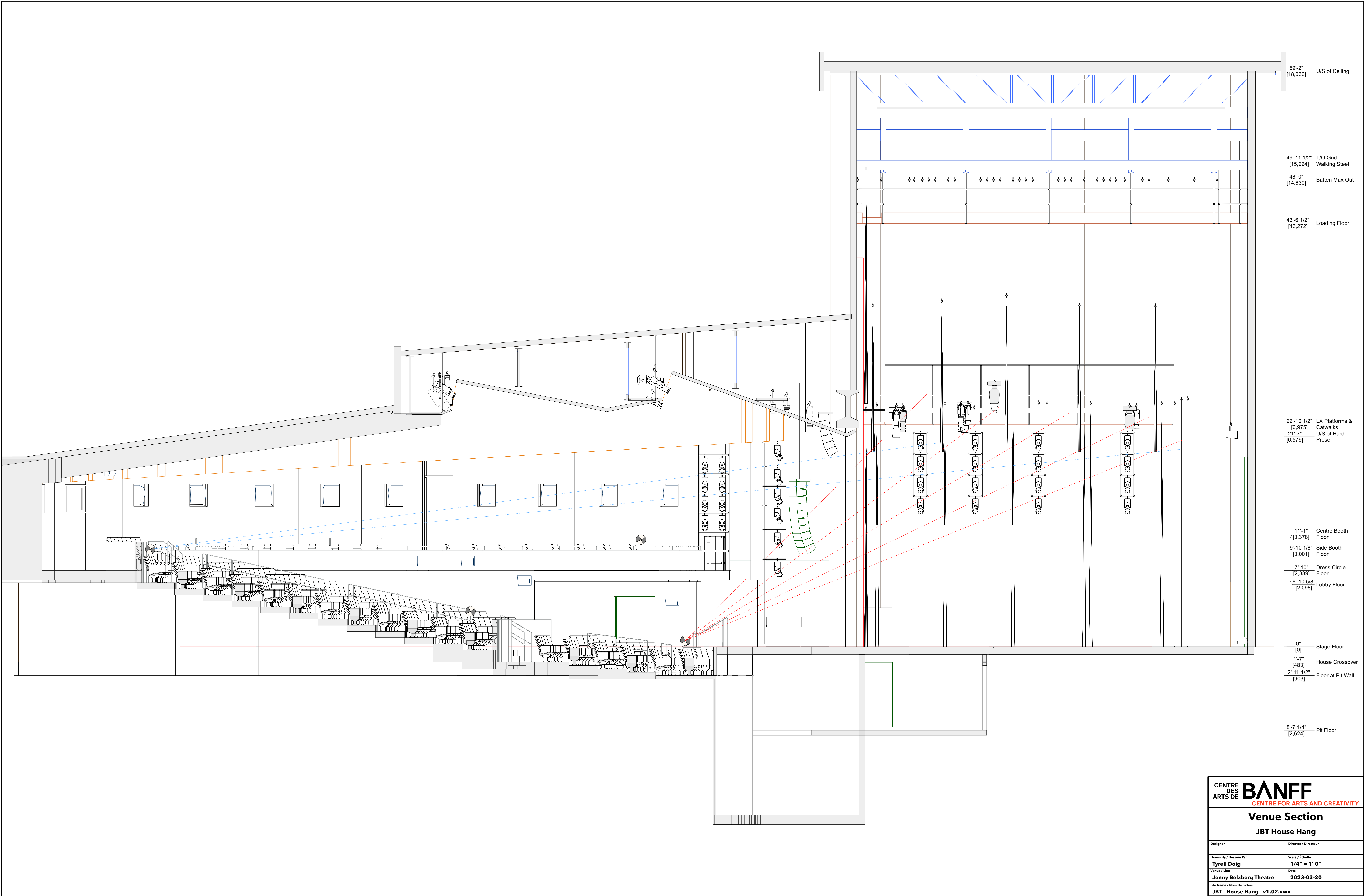
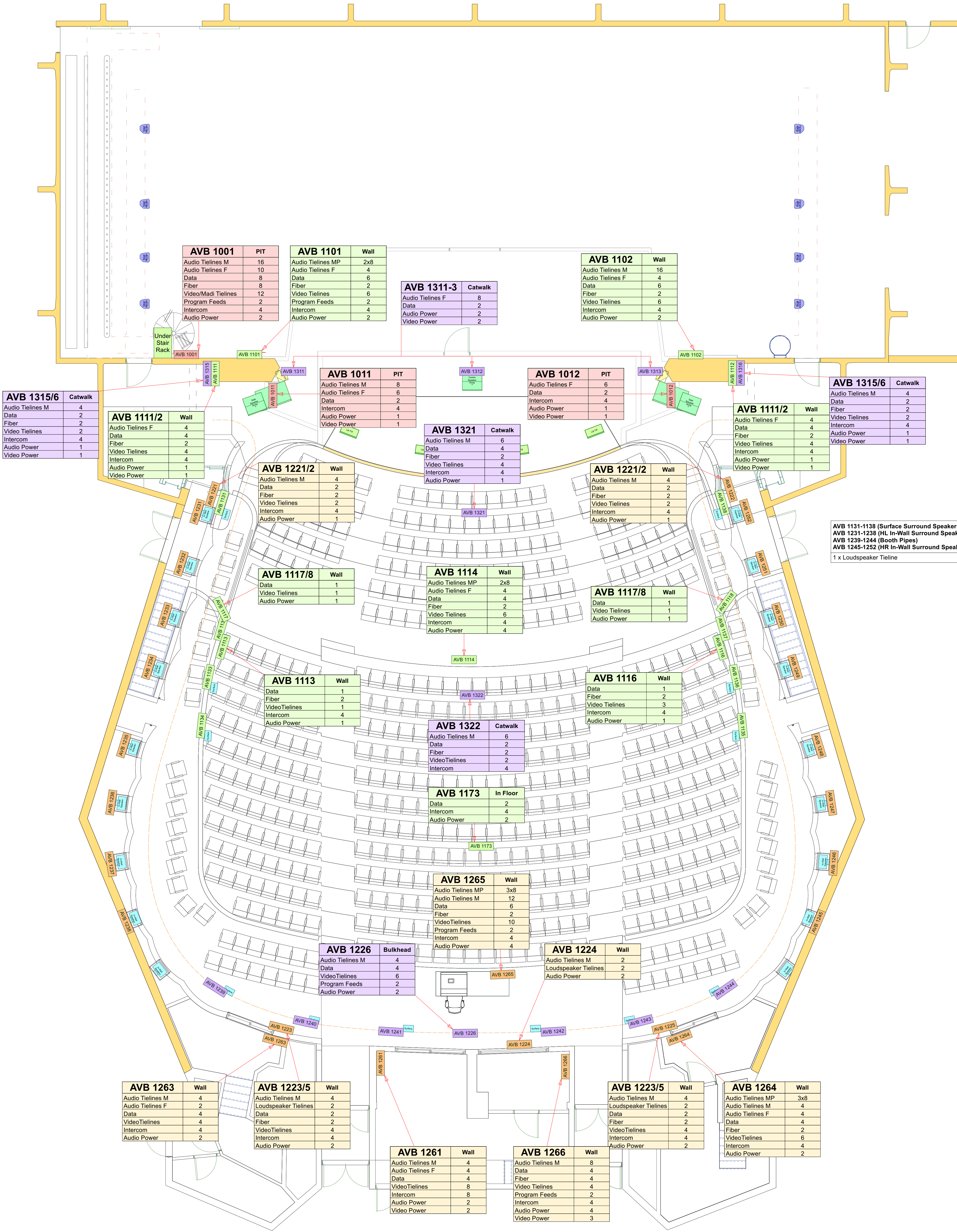
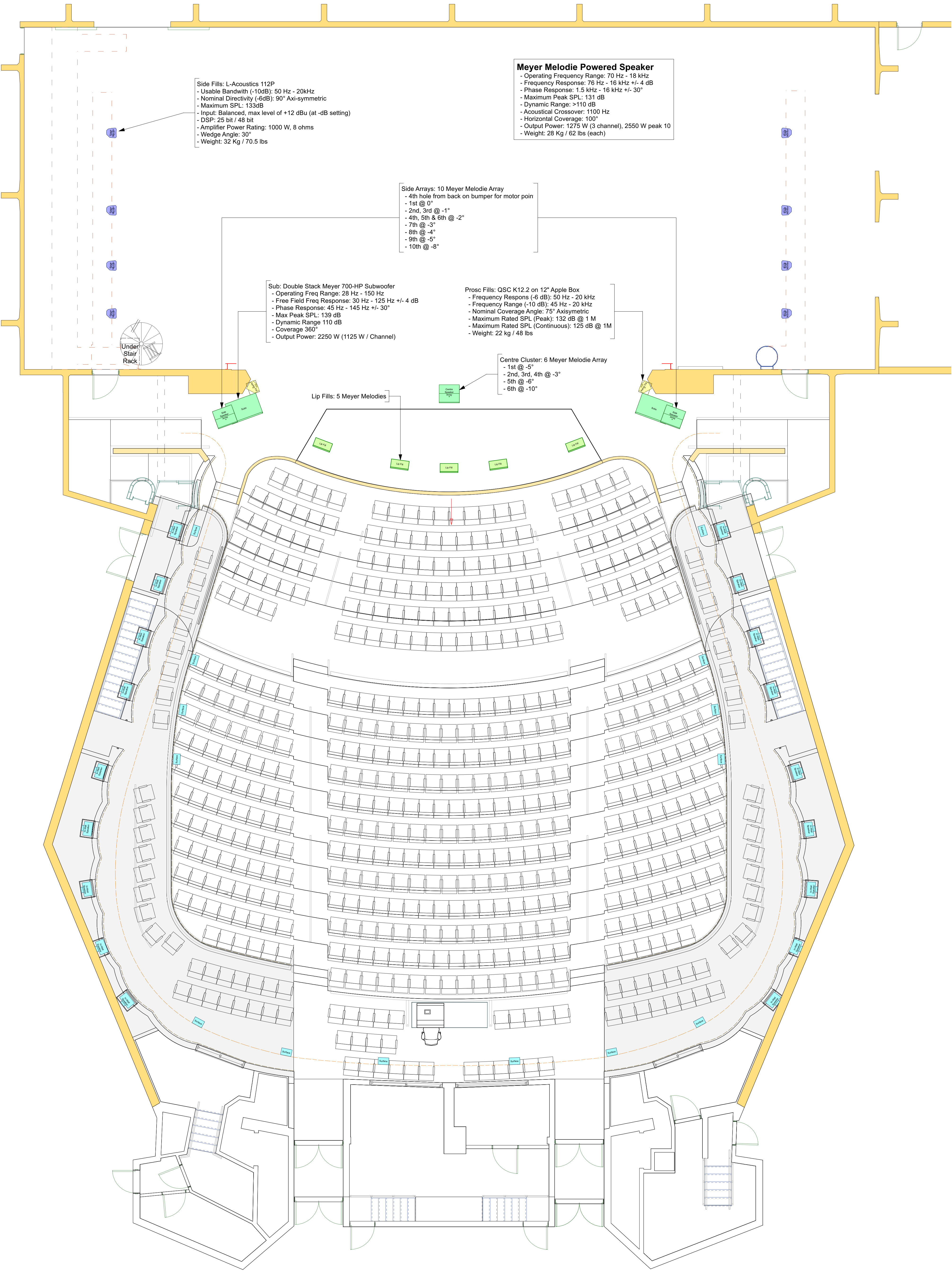


CENTRE DES ARTS DE BANFF CENTRE FOR ARTS AND CREATIVITY	
Venue Plan JBT House Hang	
Designer	Director / Directeur
Drawn By / Dessiné Par Tyrell Doig	Scale / Echelle 1:75
Venue / Lieu Jenny Belzberg Theatre	Date 2023-03-20
File Name / Nom de Fichier JBT - House Hang - v1.02.vwx	





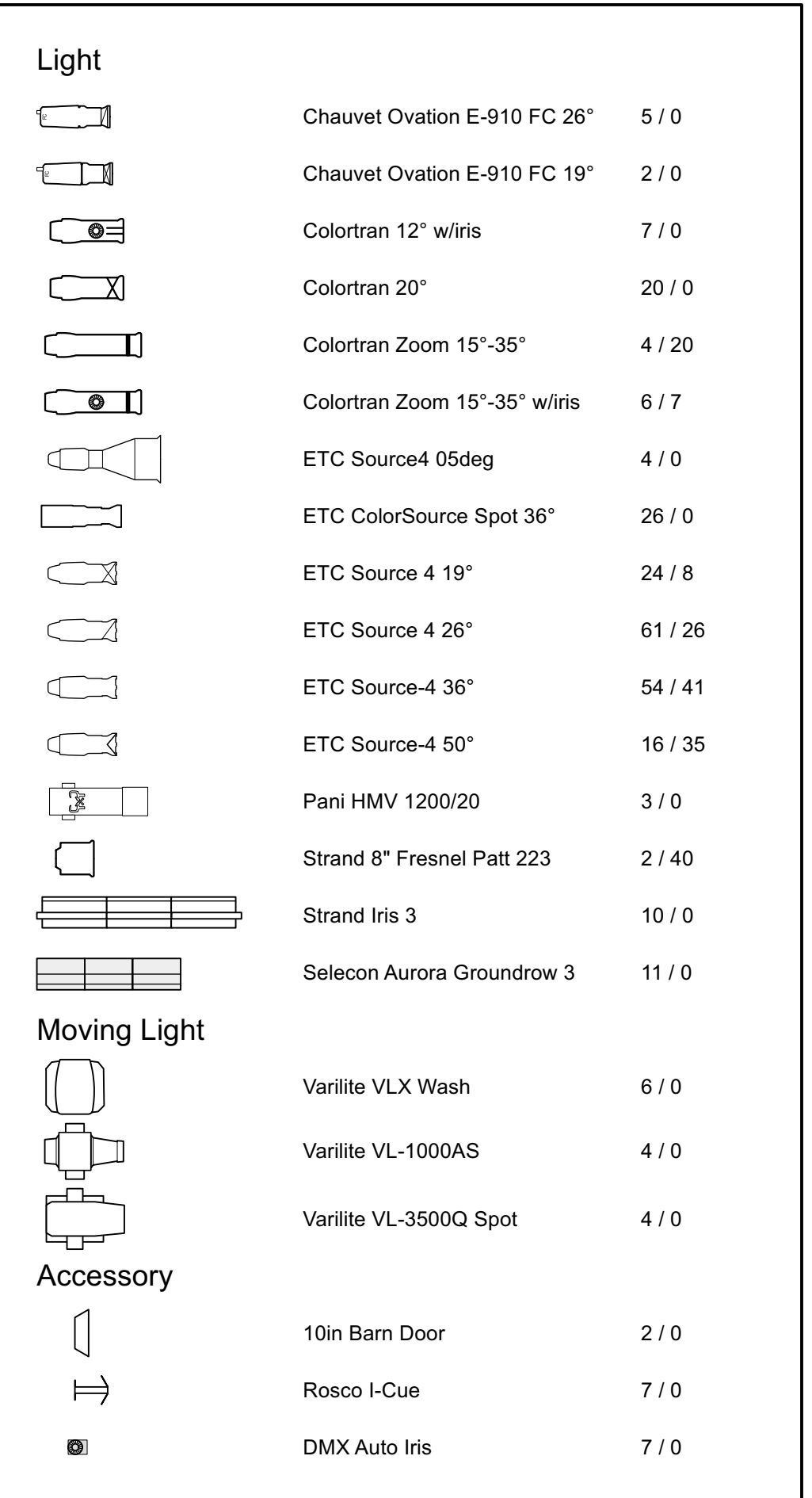


Color Summary

Color	Size	Count
L106	Strand Axial 6x9	4
L162	ETC Source 4 36"	4
L162	ETC Source 4 19"	2
L162	ETC Source 4 26"	22
L201	ETC Source 4 26"	5
L201	ETC Source 4 19"	10
L201	Colortran Zoom 15"-35"	2
Note 1	Pani Spot	3
R05	ETC Source 4 19"	10
R05	Colortran Zoom 15"-35"	2
R05	ETC Source 4 26"	5
R27	Selecon Aurora Groundrow 3	11
R27	16"X12.2"	10
R34	Colortran 20"	10
R34	7.5"	2
R34	Colortran 40	10
R64	ETC Source 4 36"	4
R64	ETC Source 4 26"	22
R64	ETC Source 4 19"	2
R67	7.5"	10
R67	Colortran 40	2
R67	Colortran 20"	10
R80	Strand 8" Fresnel Patt 223	2
R83	Selecon Aurora Groundrow 3	11
R83	16"X12.2"	10
R90	16"X12.2"	10
R90	Selecon Aurora Groundrow 3	11
R132	ETC ColorSource Spot 36"	1

NON-DIM ASSIGNMENTS	
PWR: LX 5 - VLX (#9)	PWR: LX 5 - VLX (#17)
PWR: LX 5 - ColorSources	PWR: LX 5 - VLX (#25)
PWR: LX 4 - ColorSources & Ovatons	PWR: DMX Optos/IQ Power Supply/OV FOH1
PWR: LX 3 - VLX (#1) + VLX (#3)	PWR: LX 3 - VLX1K (#5) + VLX (#7)
PWR: LX 3 - VLX1K (#9)	PWR: LX 3 - VLX1K (#11) + VLX (#13)
PWR: LX 2 - ColorSources	PWR: LX 2 - Ovatons
PWR: LX 1 - ColorSources	PWR: ARRON - ColorSources

Spare Drop Boxes			
SR GALLERY		SL GALLERY	
5 BOX #26 339 - 343	5 BOX #22 324 - 328	5 BOX #25 189 - 193	5 BOX #19 164 - 173
10 BOX #20 314 - 323	5 BOX #18 309 - 313	5 BOX #21 174 - 178	5 BOX #17 159 - 163
5 BOX #14 294-298	10 BOX #12 284 - 293	10 BOX #11 134 - 143	5 BOX #9 129 - 133
		5 BOX #5 114 - 118	



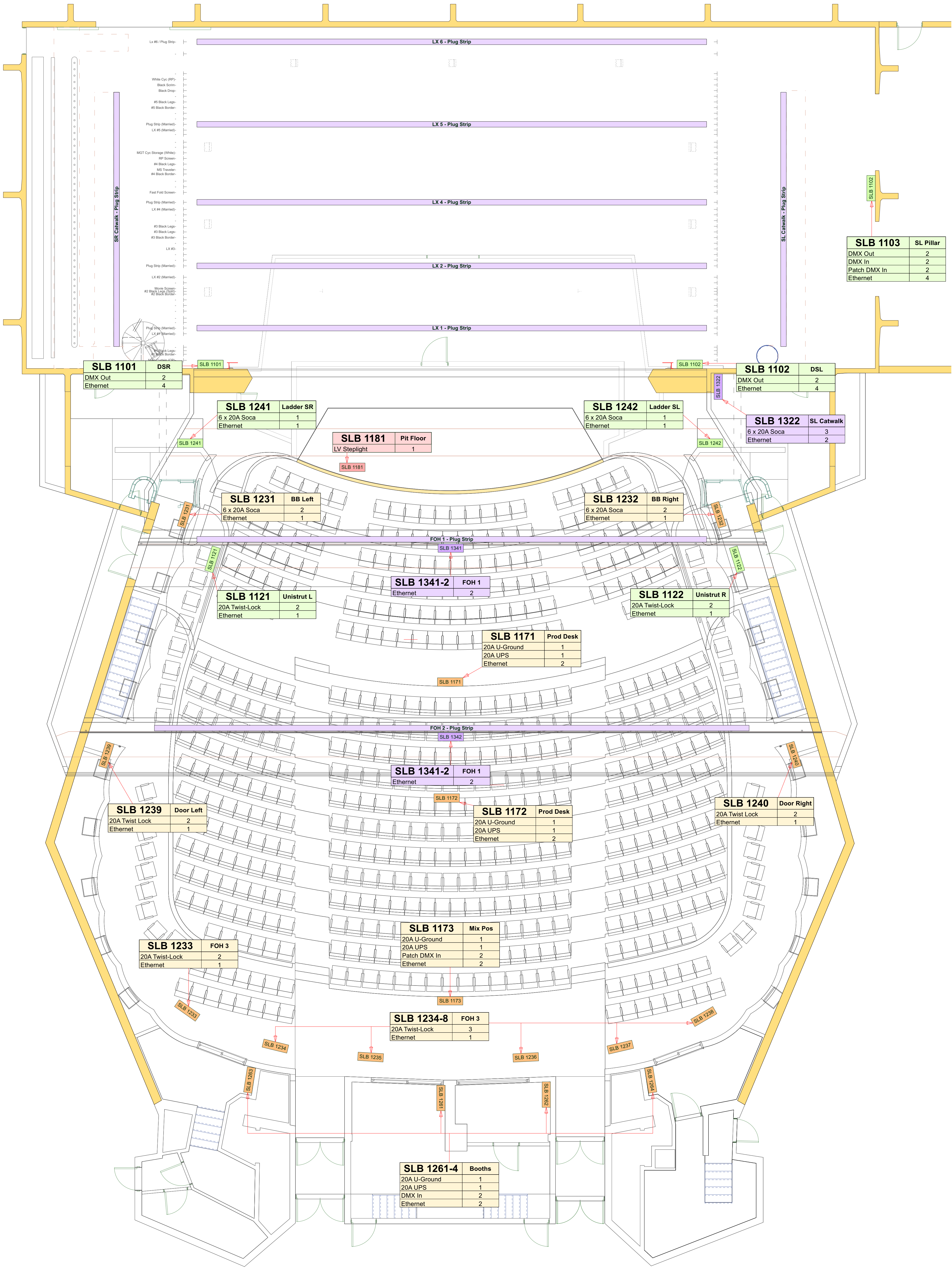
Color Summary

Color	Size	Count
L106	Strand Axial 6x9	4
L162	ETC Source 4 36"	4
L162	ETC Source 4 19"	2
L162	ETC Source 4 26"	22
L201	ETC Source 4 26"	5
L201	ETC Source 4 19"	10
L201	Colortran Zoom 15"-35"	2
Note 1	Pani Spot	3
R05	ETC Source 4 19"	10
R05	Colortran Zoom 15"-35"	2
R05	ETC Source 4 26"	5
R27	Selecon Aurora Groundrow 3	11
R27	16"X12.2"	10
R34	Colortran 20°	10
R34	7.5"	10
R34	Colortran 40	2
R64	ETC Source 4 36"	4
R64	ETC Source 4 26"	22
R64	ETC Source 4 19"	2
R67	7.5"	10
R67	Colortran 40	2
R67	Colortran 20°	2
R80	Strand 8" Fresnel Patt 223	2
R83	Selecon Aurora Groundrow 3	11
R83	16"X12.2"	10
R90	16"X12.2"	11
R90	Selecon Aurora Groundrow 3	10
R132	ETC ColorSource Spot 36°	1

ADDITIONAL NOTES:

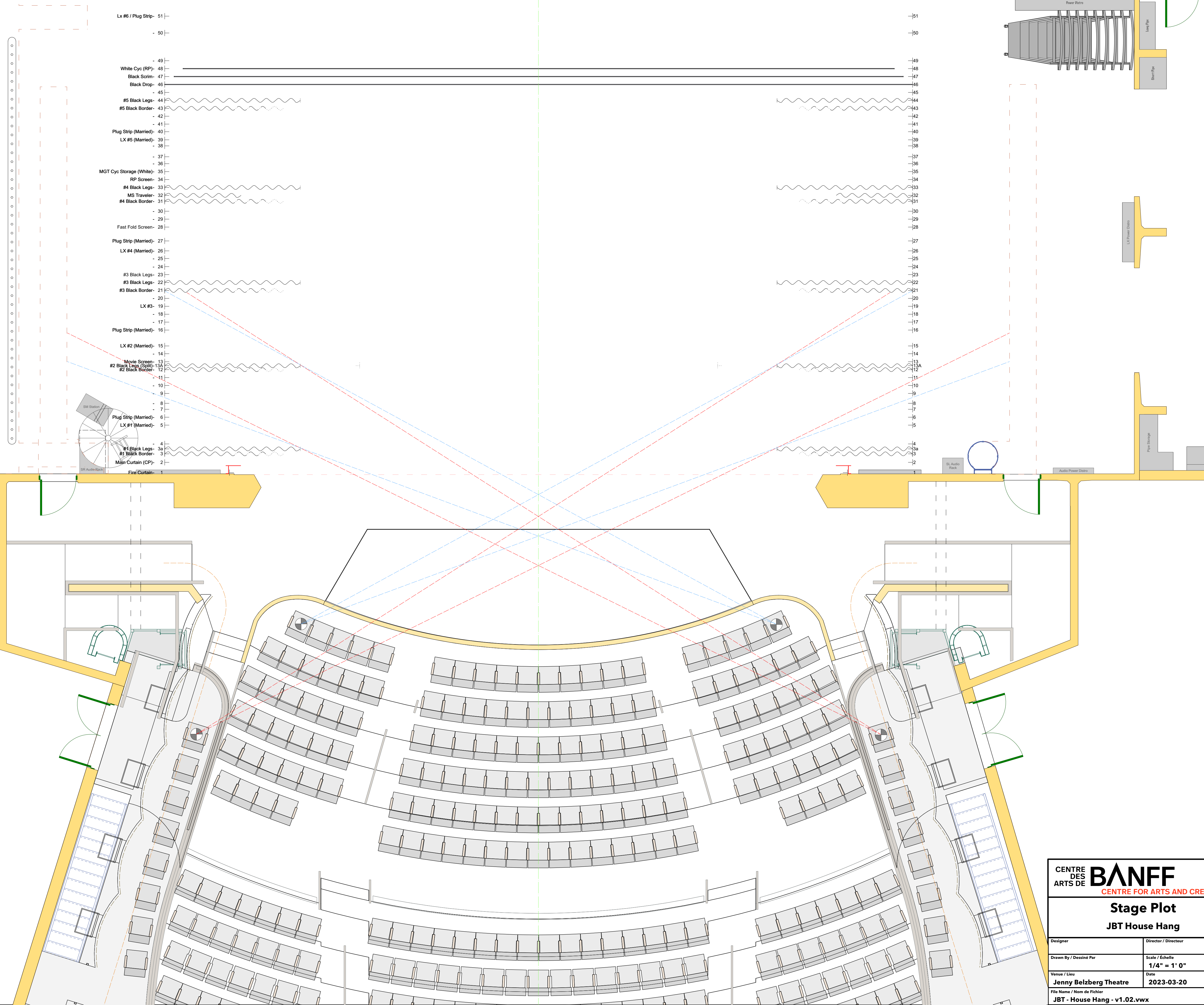
1 - FOLLOW SPOT COLOUR:
FRAME - 0: R3408 + R33
FRAME - 1: R34
FRAME - 2: R367
FRAME - 3: R51
FRAME - 4: R132

2 - FROST:
FRONTS - R119
LADDERS - R132
HI-SIDES - R119
COLORSOURCE TOPS - R119
IQ's - R132
BOX BOOMS - R132
CYC TOP AND BOTTOM - R104 (VERTICAL SPREAD)

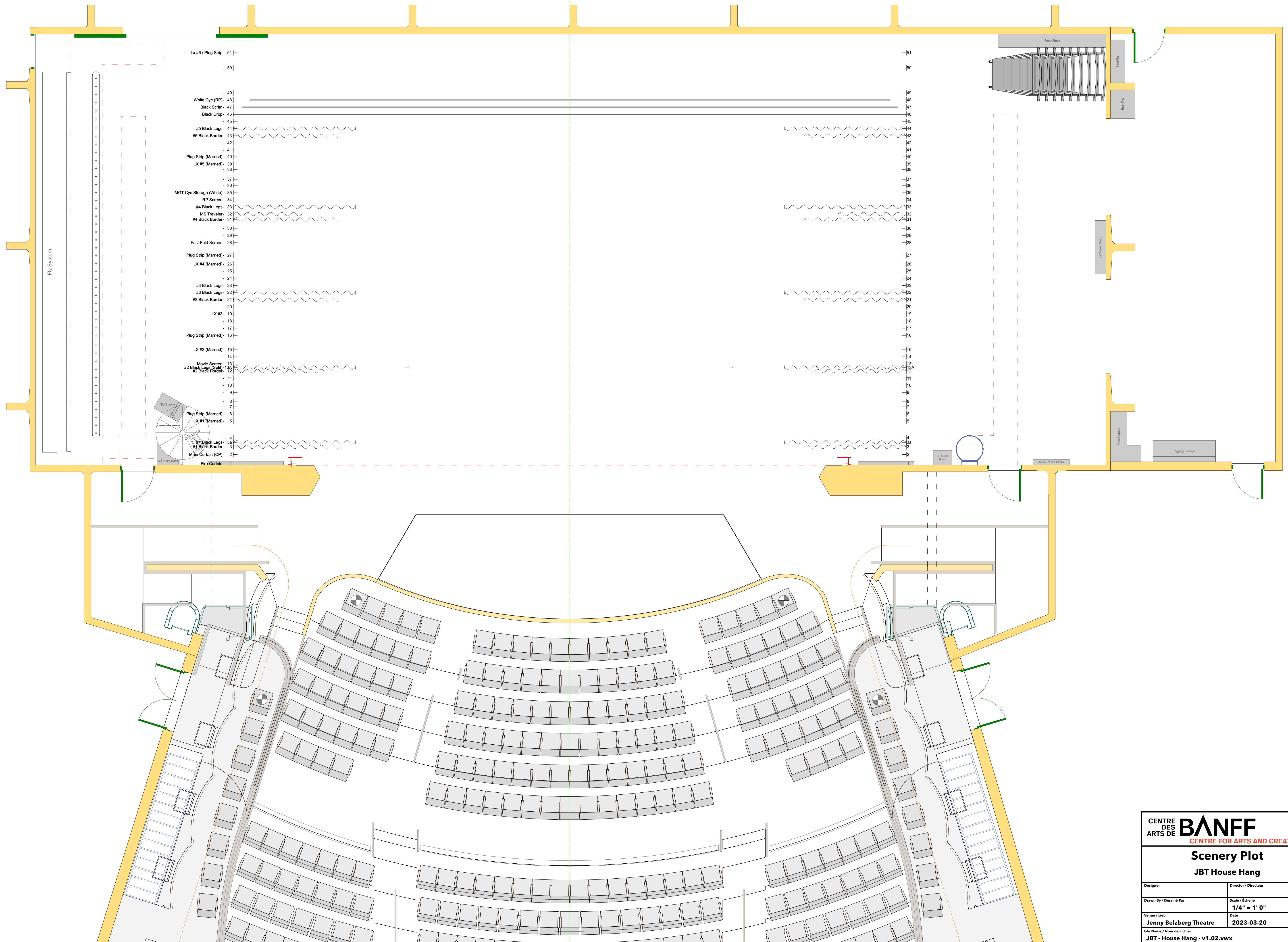


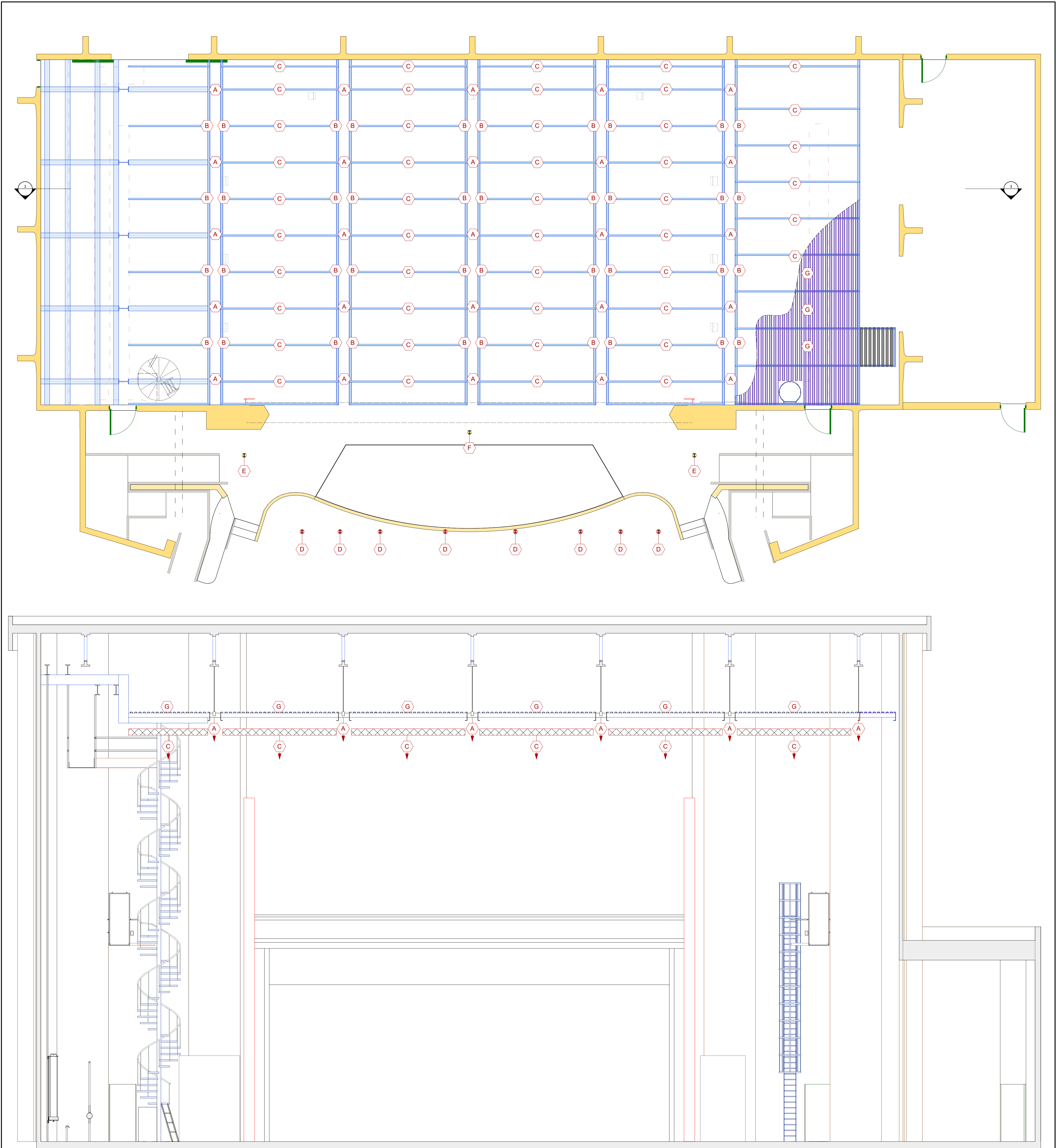
SLB 1103	SL Pillar
DMX Out	2
DMX In	2
Patch DMX In	2
Ethernet	4

LS#	To SL	Current Hang	Dimensions	Trim	Weight	Notes
51	38"9"	Lx #6 / Plug Strip		22"9"	774	
50	37"4"	Work Damit		0"	0	
49	35"0"			0"	0	
48	34"4"	White Cyc (RP)	59'-9"w x 25'-6"h	25'6"	180	
47	33"8"	Black Scrim	61'-3"w x 25'-5"h	25'5"	72	
46	33"0"	Black Drop	62'-10"w x 24'-10"h	24'10"	198	
45	32"4"			0"	0	
44	31"8"	#5 Black Legs	25'H x 16'W	25'0"	108	20' FCL
43	31"0"	#5 Black Border	15'H x 63'W	20'0"	144	
42	30"4"			0"	0	
41	29"8"			0"	0	Conflict with LS#40
40	29'1"	Plug Strip (Married)		24'9"	576	Married
39	28'3"	LX #5 (Married)		24'9"	504	Married
38	27'7"			0"	0	Conflict with LS#39
37	36'11"			0"	0	
36	26'4"			0"	0	
35	25'8"	MGT Cyc Storage (White)		0"	108	
34	25'0"	RP Screen		0"	90	
33	24'4"	#4 Black Legs	25'H x 16'W	25'0"	108	20' FCL
32	23'8"	MS Traveler	25'H x 30'W	25'0"	486	
31	23'2"	#4 Black Border	15'H x 63'W	20'1"	144	
30	22'4"			0"	0	
29	21'8"			0"	0	
29	21'0"	Fast Fold Screen		0"	72	
27	19'10"	Plug Strip (Married)		25'1"	504	Married
26	19'0"	LX #4 (Married)		25'1"	360	Married
25	18'4"			0"	0	Conflict with LS#26
24	17'8"			0"	0	
23	17'0"	#3 Black Legs		0"	0	
22	16'4"	#3 Black Legs	25'H x 16'W	25'0"	108	20' FCL
21	15'8"	#3 Black Border	15'H x 63'W	21'1"	162	
20	15'0"			0"	0	Conflict with LS#19
19	14'4"	LX #3		0"	810	
18	13'8"			0"	0	Conflict with LS#19
17	13'0"			0"	0	
16	12'4"	Plug Strip (Married)		24'7"	756	Married, Truss Batten
15	11'1"	LX #2 (Married)		24'7"	540	Married, Truss Batten
14	10'4"			0"	0	
13A	9'4"	#2 Black Legs (Split)	25'H x 16'W	25'0"	108	Split Hemp Set, 20' fCL
13	9'8"	Movie Screen		0"	756	PERMANENT
12	9'0"	#2 Black Border	15'H x 63'W	20'6"	162	
11	8'4"			0"	0	
10	7'8"			0"	0	
9	7'0"			0"	0	
8	6'3"			0"	0	
7	5'7"			0"	0	Conflict with LS#6
6	5'0"	Plug Strip (Married)		24'9"	684	Married
5	4'3"	LX #1 (Married)		24'9"	540	Married
4	2'9"			0"	0	
3a	2'4"	#1 Black Legs	25'H x 16'W	26'0"	108	Hemp Set
3	1'11"	#1 Black Border	60'-10" w x 14'-10" h	19'6"	108	
2	1'2"	Main Curtain (CP)	24'H x 46'W	24'0"	432	Permanent
1	4"	Fire Curtain		0"	820	Permanent



L#	Current Hang	Trim	Weight
51	Lx #6 / Plug Strip	229"	774
50		0"	0
49		0"	0
48	White Cyc (RP)	256"	180
47	Black Scrim	255"	72
46	Black Drop	2410"	198
45		0"	0
44	#5 Black Legs	250"	108
43	#5 Black Border	200"	144
42		0"	0
41		0"	0
40	Plug Strip (Married)	249"	576
39	LX #5 (Married)	249"	504
38		0"	0
37		0"	0
36		0"	0
35	MGT Cyc Storage (White)	0"	108
34	RP Screen	0"	90
33	#4 Black Legs	250"	108
32	MS Traveler	250"	486
31	#4 Black Border	201"	144
30		0"	0
29		0"	0
28	Fast Fold Screen	0"	72
27	Plug Strip (Married)	251"	504
26	LX #4 (Married)	251"	360
25		0"	0
24		0"	0
23	#3 Black Legs	0"	0
22	#3 Black Legs	250"	108
21	#3 Black Border	211"	162
20		0"	0
19	LX #3	0"	810
18		0"	0
17		0"	0
16	Plug Strip (Married)	247"	756
15	LX #2 (Married)	247"	540
14		0"	0
13A	#2 Black Legs (Split)	250"	108
13	Movie Screen	0"	756
12	#2 Black Border	206"	162
11		0"	0
10		0"	0
9		0"	0
8		0"	0
7		0"	0
6	Plug Strip (Married)	249"	684
5	LX #1 (Married)	249"	540
4		0"	0
3a	#1 Black Legs	260"	108
3	#1 Black Border	196"	108
2	Main Curtain (CP)	240"	432
1	Fire Curtain	0"	0





Engineer Rated Rigging Points

Code	Member Description	Uniform Load (Lbs / Ft)	Total Uniform Load (Lbs)	Concentrated Load (Lbs)*
A	Direct load at hanger location	-	-	6000
B	Load applied to double C12x20.7 Channel	700	6000	3000
C	Load applied to Junior C6x4.4 Channel	200	3000	1500

* Concentrated load can be applied anywhere on member

Note 1: Loadings shown are based upon separate loads not combined. Load combinations are possible, provided total supports at the Hanger 'A' does not exceed 6000lbs.

Note 2: Double C12x20.7 Channels (CODE B) may be uniformly or concentrated loaded to DOUBLE the loads shown. Provided the adjacent span supported by the same hanger is unloaded.

Unrated Rigging Points

Code	Member Description	Appropriate Use
D	Horizontal roof steel structural members over apron	Light FOH lighting truss
E	Custom truss spanning from precast proscenium beam to roof truss	Side speaker array
F	Ridge steel of roof truss above apron	Centre speaker array
G	Pipe spanning at least 4 grid walking c-channels	Light point loads, cable picks

CENTRE
DES
ARTS DE

BANFF
CENTRE FOR ARTS AND CREATIVITY

Rigging Details
JBT House Hang

Designer	Director / Directeur
Drawn By / Dessiné Par	Scale / Echelle 3/16" = 1' 0"
Version / Lieu	Date 2023-03-20
File Name / Nom de Fichier JBT - House Hang - v1.02.vwx	